

WINDOWS 10 SYSTEM CONFIGURATION



CONTENTS

HD video + MQA audio experience	3
HD video + MQA audio experience on PC	3
MQA compatible products	4
System configuration - Windows 10	5
• Sound settings	5
• Playback preferences & device properties	9
Browser setup - Windows 10	10

HD VIDEO + MQA AUDIO EXPERIENCE

For the first time you can experience video with superior sound – whether you have a decoder or not. Add an MQA decoder to reveal the full studio sound and get even closer to the artists you love.

Video with MQA audio can be played back on a number of devices including: iOS, Android, PC and Mac.

HD VIDEO + MQA AUDIO EXPERIENCE ON PC

There's a simple system + browser setup needed to make sure you can enjoy the recording in the best available quality. To get the full MQA experience make sure you've plugged in your MQA-enabled DAC into the USB input of your desktop device.

Technical details: the audio from The BME Sessions was captured at 24 bit /96kHz. The MQA encoding process folds this information into a 24 bit/48kHz file.

MQA COMPATIBLE PRODUCTS

Astell&Kern SP2000

Audiolab 8300CDQ

Bel Canto Black EXDAC, EX Integrated, ACI600, E1X DAC and E1X Integrated

Brinkmann Nyquist MkII

CanEver ZeroUno DAC, Plus and DAC-HPA

Cocktail Audio/Novafidelity X45Pro, X50 Pro, X50D, X45, X35

dCS Rossini DAC and Player, Vivaldi One

EMM Labs DA2 V2, DV2

Esoteric Grandioso D1X

exaSound e32MkII, PlayPoint DM

Hegel H390, H590

iFi Audio Pro iDSD

JAVS X7-DAC

M2Tech Young MkIII

Mark Levinson No5802 and No5805

Matrix Audio X-Sabre Pro

Meridian 218, 251, 818v3, Ultra DAC

MSB Audio Select II and Reference DAC

Mytek Brooklyn+, Manhattan II, Liberty DAC and Brooklyn Bridge

NAD D3045

NuPrime Evolution DAC

Pioneer PD-50AE

PALAB DAC-M1

Pro-Ject Pre Box S2 Digital, Pre Box RS2 Digital

PureAudio Lotus DAC5

Technics SU-G30, ST-C700D

MOON ACE, 390, 780D, 280D, 680D

S.M.S.L M500

Sonnet Morpheus DAC

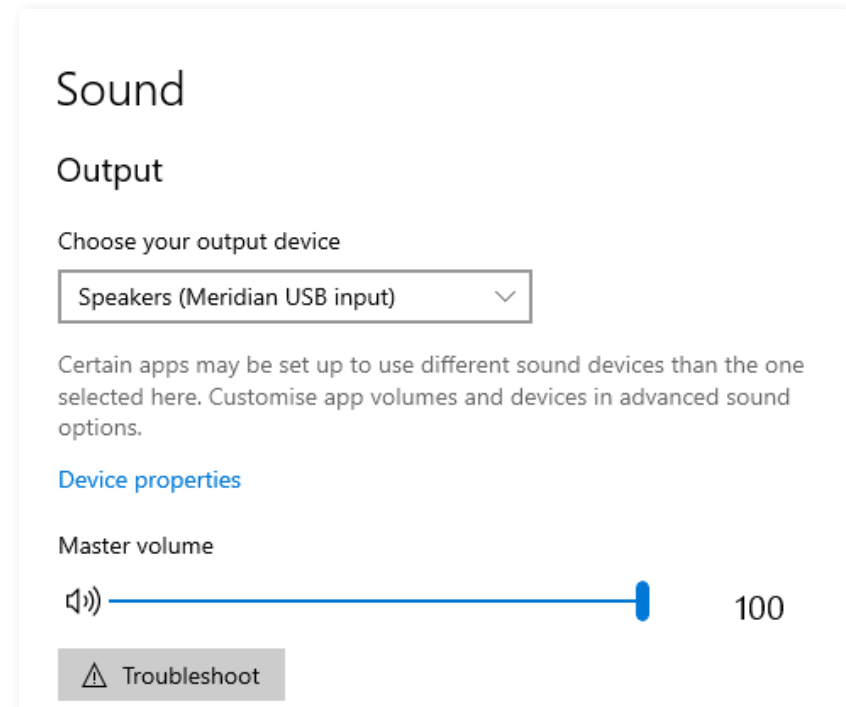
SYSTEM CONFIGURATION - WINDOWS 10

STEP 1: FIND SOUND SETTINGS

- Right-click on the speaker in the tray, or
- Press Windows key + I and search for Sound, or
- Go to Windows Settings Sound (Control Panel -> Sound -> Playback)

STEP 2:

- If it isn't already set, check that your preferred output device is selected and make it Default Device NOT Default Communication Device
- Click on Device Properties

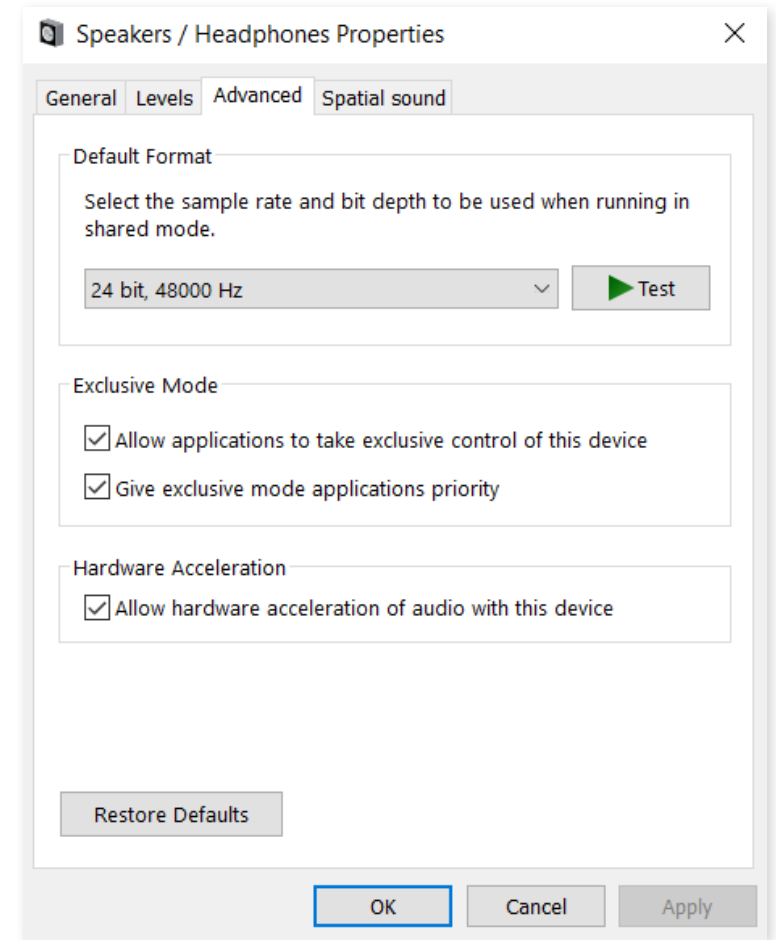
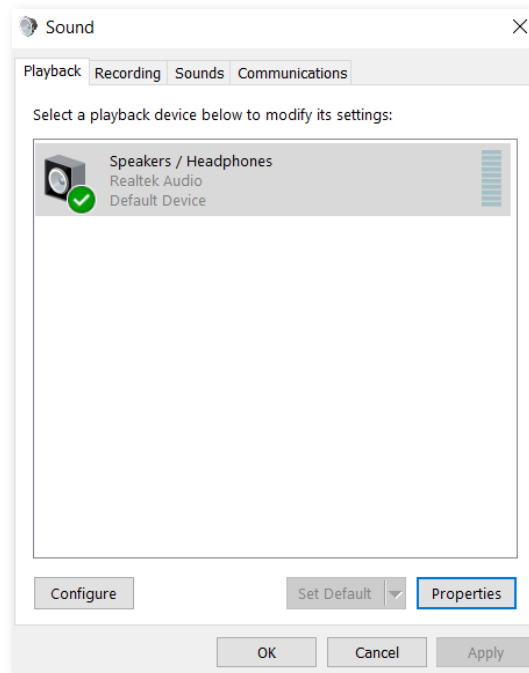


SYSTEM CONFIGURATION - WINDOWS 10

STEP 3:

Option 1: Setting the Playback Preferences for your headphones

- Go to Speakers/Headphones Properties -> Advanced
- Tick both boxes in Exclusive Mode
- Select 2ch 24-bit 48.0 kHz as the Format setting (for BME Sessions & Unamas)
- Select 2ch 24-bit 44.1 kHz as the Format setting (for 2L and Dominique Fils-Aime)

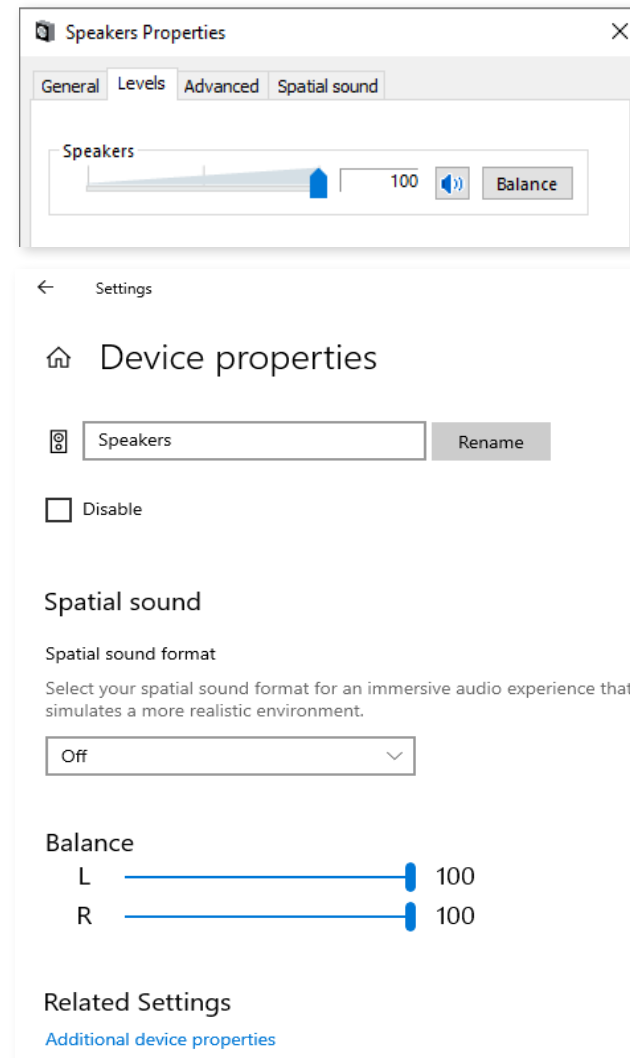


SYSTEM CONFIGURATION - WINDOWS 10

STEP 3:

Option 2: Setting the Playback Preferences for your external audio device

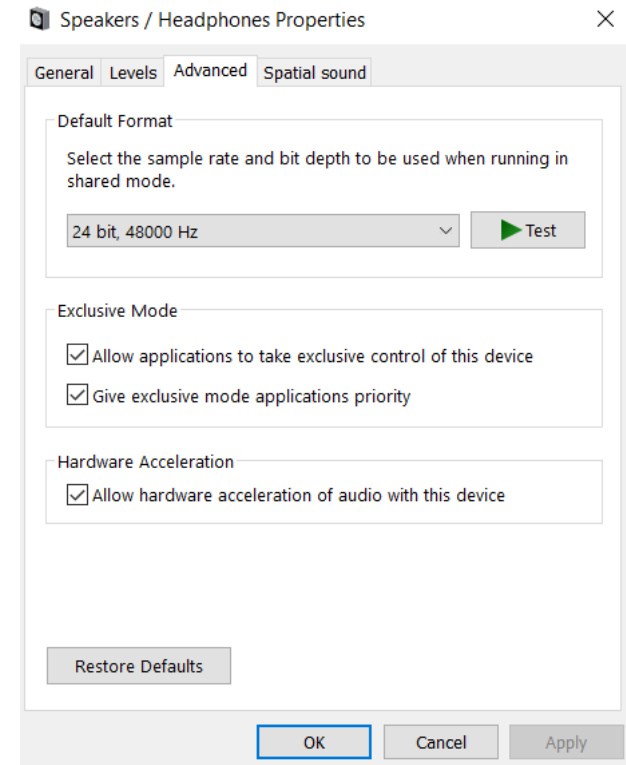
- Switch off Spatial sound
- Check Balance for L & R is 100%
- Click on Additional device properties
- Go to Levels tab and set volume levels as follows:
 - a) If you have an external audio device WITH an external volume control, set volume to 100% or
 - b) If you have an external audio device WITHOUT an external volume control, adjust volume to your preferred level



SYSTEM CONFIGURATION - WINDOWS 10

STEP 4:

- Go to Advanced tab
- Tick both boxes in Exclusive Mode
- Select 2ch 24-bit 48.0 kHz as the Format setting (for BME Sessions & Unamas)
- Select 2ch 24-bit 44.1 kHz as the Format setting (for 2L and Dominique Fils-Aime)

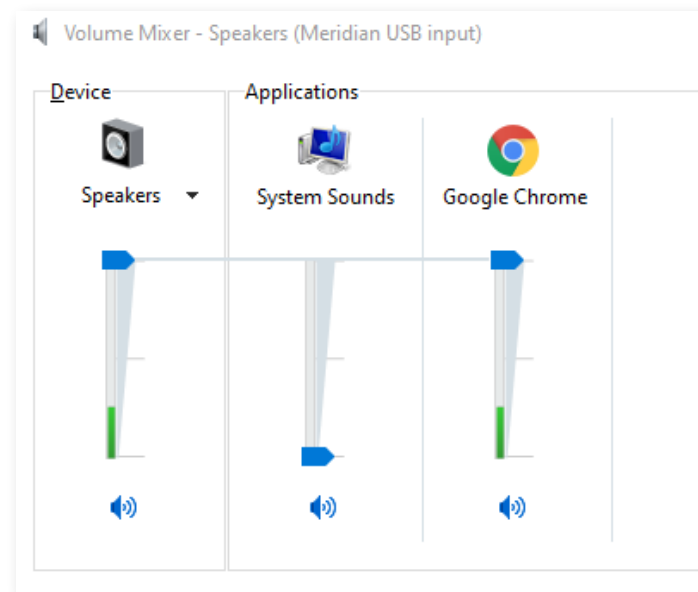


SYSTEM CONFIGURATION - WINDOWS 10

STEP 5: (OPTIONAL)

To make sure the audio quality remains bit-perfect and uninterrupted, you can set the system mixer as shown opposite.

- Right-click on the speaker in the tray
- Select Volume Mixer
- Set System Sounds to 0
- Set Chrome volume to 100%



BROWSER SETUP - WINDOWS 10

When using Google Chrome, Firefox or Edge, make sure the browser volume level is set to 100%.